

PFW IntelliDealer

# Product Support: Rental

See what's *really* happening with your rental fleet

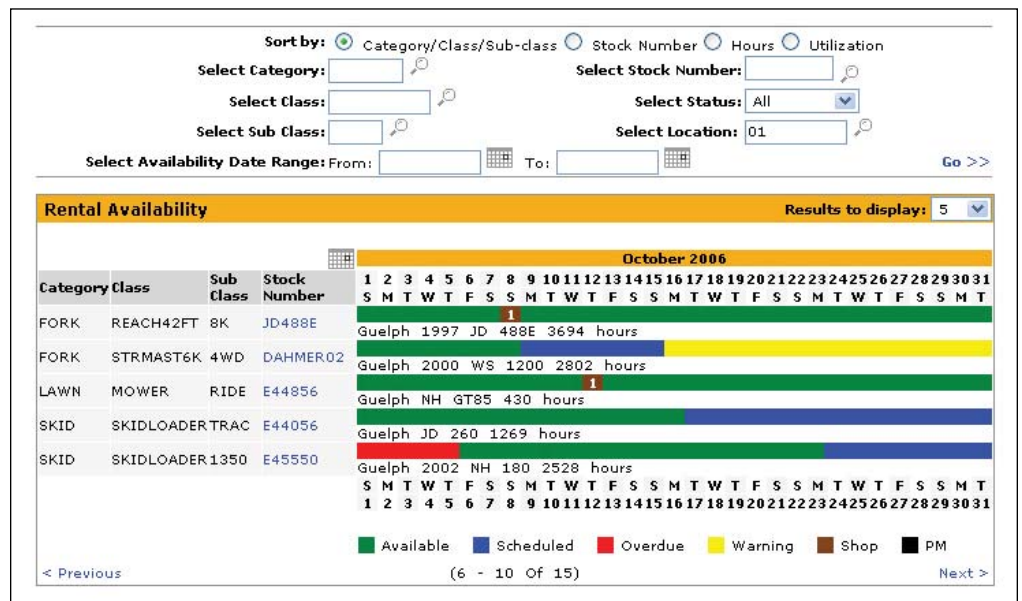
### Key Features

- Easy contract management via an easy-to-use tabular interface
- A powerful, graphical Rental Availability screen
- Access to the equipment profile without having to exit the rental contract
- Quick access to information via tabs and links
- Unit searches by stock or tag number, category, class, and type
- User security available for greater control
- The ability to input both internal and printable comments
- The consolidation of process questions
- A parts-margin facility, including an import feature
- Rental reporting capability

Enjoy the benefits of accessing all of your integrated rental-business information in one place. PFW IntelliDealer Product Support Rental helps you track your rental fleet through access to inventory – from a user’s own branch or across the enterprise. Rental’s powerful search screens drive the all-important selection of units in order to improve customer service and satisfaction and optimize the profitability of your rental fleet.

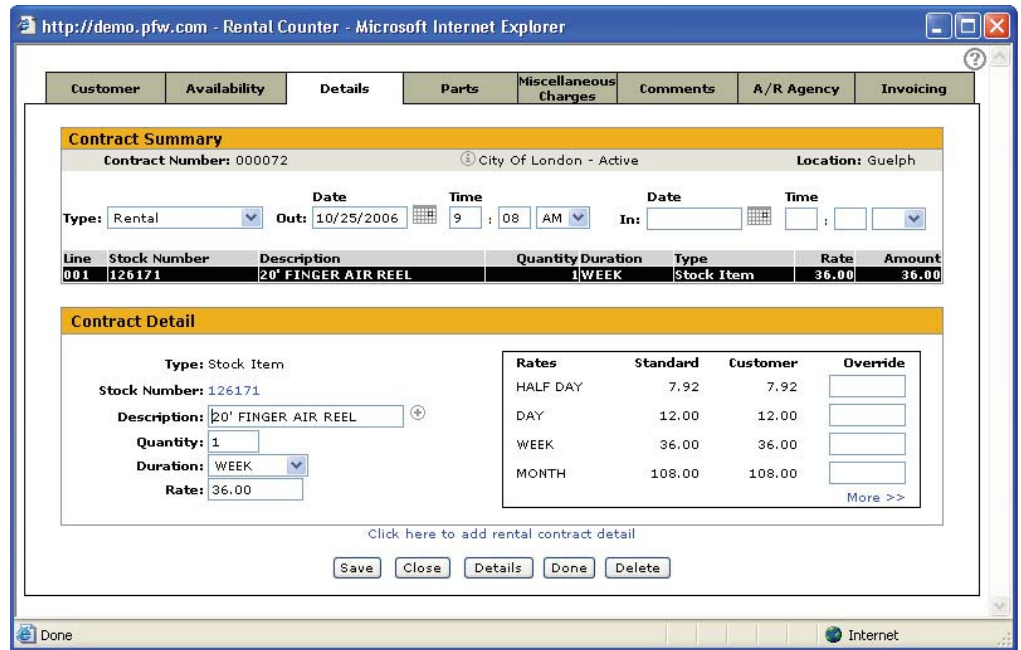
### Access to Information

The result of a user-focused design process, Rental Counter features a simple interface where operators easily open and close contracts and build invoices. Rental Counter’s tabular design lets you conveniently configure the agreement with the Contract tab, check fleet status with the Rental Availability tab in order give customers quick status updates, and then use the additional functions to further configure the contract – for example, the application of miscellaneous fuel charges.



This view takes advantage of IntelliDealer’s GUI environment in order to put your whole rental fleet in perspective: See detailed unit status across the dates you need to track. Ultimately, your customers will benefit from your informed rental management.

Rental Availability allows you to sort and view rental units by category/class/sub-class, stock number, hours, or utilization – and over the date range you require. The powerful graphic overview lets you determine your available, scheduled, overdue, warning-marked, shop-due and preventative maintenance-flagged rental units. As well, drill down for equipment profile information and, when a unit is selected, Rental intuitively switches to the Details screen, where the unit’s rental duration and rates are shown – and the option exists to override those values.



The Details tab allows users to view or change the parameters of a rental contract, including a facility to override rental rates if necessary.

### Integration

Over and above other business systems, Rental shows off IntelliDealer’s complete integration in order to tap into the G/L and set up billing and invoicing defaults – based on user-defined parameters, such as durations, rental rates, and other defined minimums and maximums.

Rental is also central to the PFW Traffic system – the intuitive Rental system is connected to the Traffic system, so once a rental contract has been created the system will automatically prompt you to create a traffic ticket, so you don’t have to leave the Rental system to keep track of your fleet. This traffic “ticketing” system is employed in order to determine the precise status of rental units. Also, in IntelliDealer Customer Care, you can see a customer’s on-rent equipment, and Financial Management shows a complete rental invoice history.

### Efficiency and Accuracy

Rental streamlines the billing process and improves customer service and satisfaction, but can also be used to show your customers that you are billing them on an accurate and timely basis, reducing the number of manual calculations. Rental has the ability to automatically calculate or adjust rental payments owing on equipment that has either exceeded the original rental term or that has been returned before the due date. This process allows the system to determine the most appropriate billing amount based on actual rental time and, where necessary, automatically credit the customer’s account.

### System Requirements

- Windows® Vista Business, 2000 or XP Pro SP2 Operating System
- Processor and memory size based on Operating System recommendations (or greater)
- Internet Explorer 5+
- Ethernet Ready
- IBM® Power6™ recommended, scaled by number of users
- 8 GB RAM for server or greater, depending on number of users
- VPN access to server via Internet
- 512 Kbps remote store connection, determined by number of devices
- Current PFW system release
- Current IBM OS release
- LANSA® License

### Request More Information

If you would like more information, please visit [www.pfw.com](http://www.pfw.com) or contact our Sales Team at (519) 474-3300 ext. 230 or [sales@pfw.com](mailto:sales@pfw.com).

