

September 2010

# New For Release 7.0

## Printer File Configuration

A new option has been added to the Utilities feature under Administration Quick Links (Figure 1) to configure printer file changes. It's labeled "Configure Printer Files" (Figure 2).

Figure 1

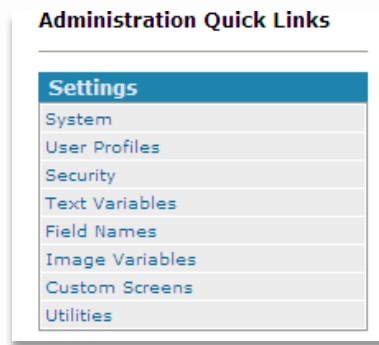
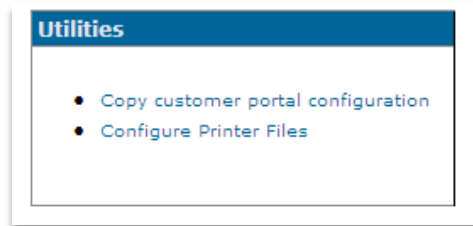
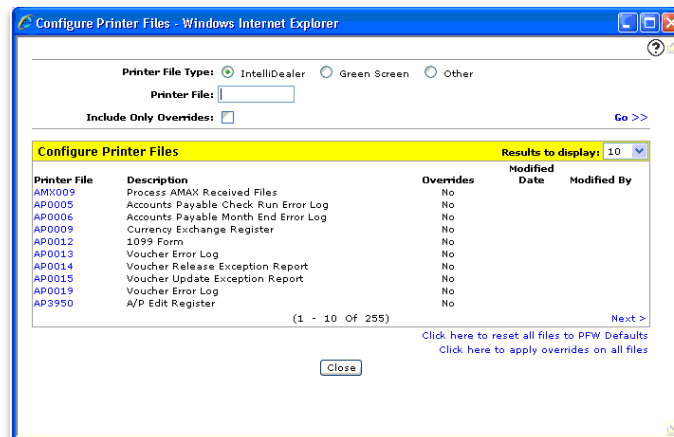


Figure 2



When this option is selected, the system will show all of the printer files that are used for the various reports generated by the system (Figure 3). Simply click on the desired printer file name if you would like to override the PFW-supplied attributes for that printer file.

Figure 3



After selecting the desired printer file you will be taken to a screen that features the printer file attributes (Figure 4) where you can chose to override the defaults. The attributes will take effect when the "Save" button is pressed. PFW will also automatically reapply your saved attributes during the next release load.

Figure 4

Attribute	PFW Default	Override
Printer	*JOB	<input type="text"/>
Printer Device Type	*SCS	<input type="text"/>
Page size - Length - Lines Per Page	66,000	<input type="text"/>
Page size - Width - Positions Per Line	132,000	<input type="text"/>
Characters Per Inch	10.0	<input type="text"/>
Print Quality	*STD	<input type="text"/>
Source Drawer	1	<input type="text"/> or *E1, *FORMDF
Font - Identifier	*CPI	<input type="text"/> or *CPI, *DEVD
Font - Point Size	*NONE	<input type="text"/> or *NONE
Coded Font	*FNTCHRSET	<input type="text"/> or *FNTCHRSET
Coded Font Library		<input type="text"/> or *LIBL, *CURLIB
Coded Font Point Size	*NONE	<input type="text"/> or *NONE
Degree Of Page Rotation		<input type="text"/>
Print On Both Sides	*NO	<input type="text"/>
Front Side Overlay	*NONE	<input type="text"/> or *NONE
Front Side Overlay Library		<input type="text"/> or *LIBL, *CURLIB
Front Side Overlay Offset Down	0.000	<input type="text"/> or zero: <input type="checkbox"/>
Front Side Overlay Offset Across	0.000	<input type="text"/> or zero: <input type="checkbox"/>
Back Side Overlay	*FRONTOVL	<input type="text"/> or *FRONTOVL, *NONE
Back Side Overlay Library		<input type="text"/> or *LIBL, *CURLIB
Back Side Overlay Offset Down	0.000	<input type="text"/> or zero: <input type="checkbox"/>
Back Side Overlay Offset Across	0.000	<input type="text"/> or zero: <input type="checkbox"/>
Spooled Output Queue	*JOB	<input type="text"/> or *JOB, *DEV
Spooled Output Queue Library		<input type="text"/> or *LIBL, *CURLIB
Copies	1	<input type="text"/>
Hold Spooled File	*NO	<input type="text"/>
Save Spooled File	*NO	<input type="text"/>

Save    Save & Next    Close

Please note that on the Configure Printer Files screen (Figure 4), there is a link to reset all the printer file attributes for all printer files to the PFW default values, and a link to apply overrides on all files if you have mistakenly reset all printer files back to the PFW defaults.