

March 2010

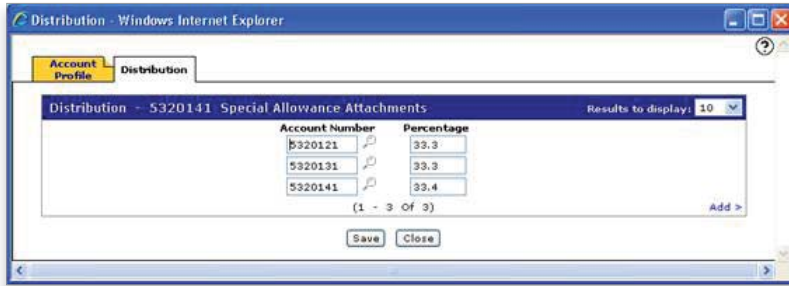
New for Release 7.0

General Ledger Enhancements

Account Distribution Includes One Decimal Position

The Percentage field on the Distribution tab of Chart of Accounts now allows the user to key in one decimal position. This will provide more precise distribution amounts to be made. In the example below, 33.4 % of account 5320141 is being distributed to account 5320141.

Figure 1



Trial Balance Report

A Trial Balance report option has been added to Financial Reporting (Figure 2). This report (Figure 4) lists all general ledger account numbers with their account balances. A corresponding access security switch has also been added to control which users can access this option.

Figure 2

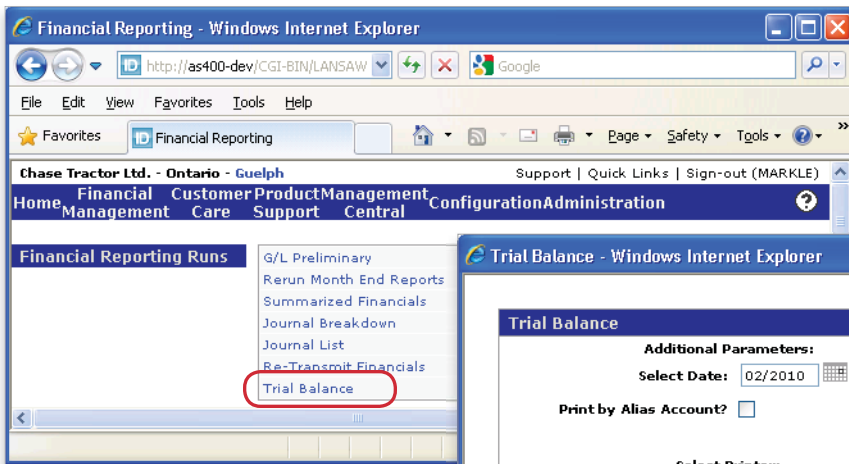


Figure 3

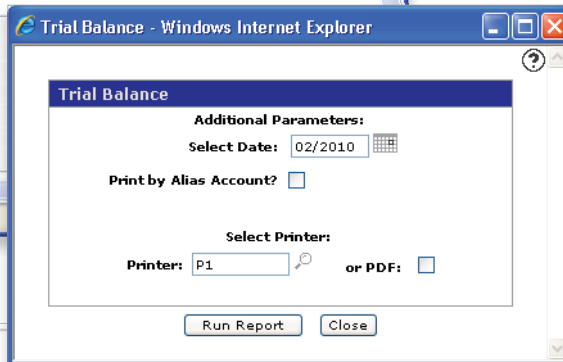


Figure 4

Account	Center	Description	Debit Amount	Credit Amount
16004	01	Used Attachments	551,083.68	
16099	01	Inventory Allowance		23,770.57
16300	01	Carry Over Deposits	1,070,456.00	
16400	01	Consigned Clearing		4,918.84
16600	01	Parts	1,342,022.12	
16600	02	Parts	891,327.36	
16600	03	Parts	657,032.06	
16600	04	Parts	626,977.38	
16600	05	Parts	102,842.63	

! IMPORTANT ANNOUNCEMENT FOR ALL JOHN DEERE DEALERS

All John Deere dealers should have already received communications from John Deere on the replacement of the JDWIN Warranty Interface by the **John Deere WINXML Warranty Interface**. John Deere will be utilizing an SAP Warranty product for the handling of warranty processes and that is the main reason for this new interface.

The PFW R6V07 release (IntelliDealer only) is the only release where this new interface will be supported. All PFW clients should upgrade to R6V07 to ensure they are ready once this product has gone through the proper product testing process.

According to timelines coordinated with John Deere, the suggested beta dealer testing for the **John Deere WINXML Warranty Interface** will begin in March and the estimated general release will be in May 2010.

We have also heard that in the future, John Deere will be discontinuing the **JDWIN** interface.

Please call your PFW sales representative for pricing on this new interface or if you have any questions.

Request More Information

For more information on these software features or to order R6V07, contact PFW Client Services at 519.474.3700, or e-mail support@pfw.com.

