

June 2010

# New for IntelliDealer

Release 7.0 (Spring 2010)

## Create and Select non-PFW iSeries Files in Data Miner

### Creating a non-PFW File

To create an iSeries file, click on the 'iSeries File' radio button on the Data Miner Query window (Figure 1).

In this example the non-PFW file being created is based on fields from the PARTMAST file. The fields you select in the Select Field window, accessed from the Columns tab, will be included in the new file (Figure 2).

Click on the "Run Report" button and you will be prompted to enter a new file name to save the data to (Figure 3).

Data Miner forces the file name to start with 'DM' to ensure it does not conflict with an existing PFW file name. Click on "Save" to create the file (Figure 4).

Figure 1

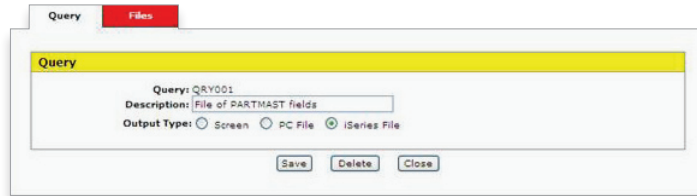


Figure 2

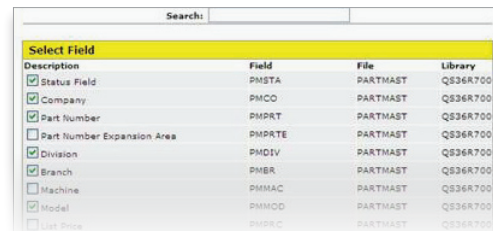


Figure 4



Figure 3



### Selecting a non-PFW File to Query

When you search in the "Add file" window, all native iSeries files in the default library will appear in the list. This includes files created by Data Miner and those created outside of the PFW system. For example, the file DMPARTS created in the example above would appear in the list. A file created by Data Miner will list the Data Miner Query name, user, and source file (or files if a join was used) that were used to create it, in the Description field (Figure 5).

Figure 5

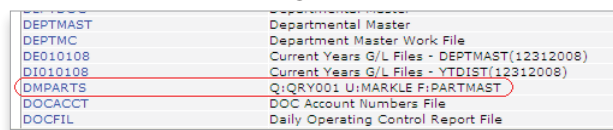
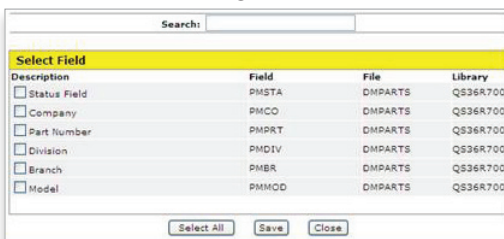


Figure 6



Notice that it contains only the columns selected by the query that created the file (Figure 6).

**Important Note Regarding PFW's Upcoming Release 7.0 (Summer 2010)**

In preparation for our next software release, we would like to inform dealers that you will be required to upgrade your IBM operating system to IBM's current release: IBM i 6.1 (formerly i5/OS V6R1).

**Preparation is a must for a successful upgrade to V6R1.** It is advisable to contact PFW Client Services prior to this upgrade to ensure that all steps have been completed and to answer any questions that you may have regarding this upgrade.

Additional information can be found at IBM's System i (iSeries) [Upgrade Planning Website](#).

**Holiday Hours**

The PFW business offices will be CLOSED for the following holidays:

Canada Day	Wednesday, July 1st
Labor Day	Monday, September 6th*

A limited number of support personnel will be available from 8 a.m. to 5 p.m. ET. Emergency after-hours support will also be available. (\* Emergency support only)

**Request More Information**

For more information on these software features or to order R6V07, contact PFW Client Services at 519.474.3700, or e-mail [support@pfw.com](mailto:support@pfw.com).