

development details



May 2005

Effective in R6V03: Shared Signature Pad Feature

This new feature allows you to attach the signature pad models TT1500 and 8810 from HHP to your network via TCP/IP and share that signature pad among any PCs in that network. This means, for example, if you have three PCs on your parts counter, those PCs can share one signature pad attached directly to the network.

Using this new feature will require a new entry in table SIGPADIP, using the tables maintenance program WRKPFWVAL, to cross reference the IP address (for IntelliDealer) or session ID (for green screen) of each session to the IP address of the signature pad (Fig. 1).

Session Type	Terminal ID or IP address	Signature Pad IP Address
IntelliDealer	65.123.145.23	65.156.311.26
Green Screen	A1	65.156.311.26

Fig. 1

Figure 2 demonstrates the table SIGPADIP configuration for an IntelliDealer session.

```
§2CN109 TABLES UPDATE
TABLE NAME: SIGPADIP          TRCD: CHG
                              STA:
TERMINAL ID/TCPIP ADDRESS: 65.123.145.23
SIGNATURE PAD TCPIP ADDRESS: 65.123.145.26
                              F6=Start Request  F14=Test Connection
```

Fig. 2

Figure 3 demonstrates the table SIGPADIP configuration for a green screen session.

```
§2CN109 TABLES UPDATE
TABLE NAME: SIGPADIP          TRCD: CHG
                              STA:
TERMINAL ID/TCPIP ADDRESS: A1
SIGNATURE PAD TCPIP ADDRESS: 65.123.145.26
                              F6=Start Request  F14=Test Connection
```

Fig. 3

When the user selects the option in IntelliDealer or green screen to process the invoice, that user will be presented with a window prompting them to have the customer sign on the pad (Fig. 4).



Fig. 4

There is also an optional feature to view the signature as it is being captured, and to edit the *Signed By* field so that both a name and signature are recorded in the system (Fig. 5).

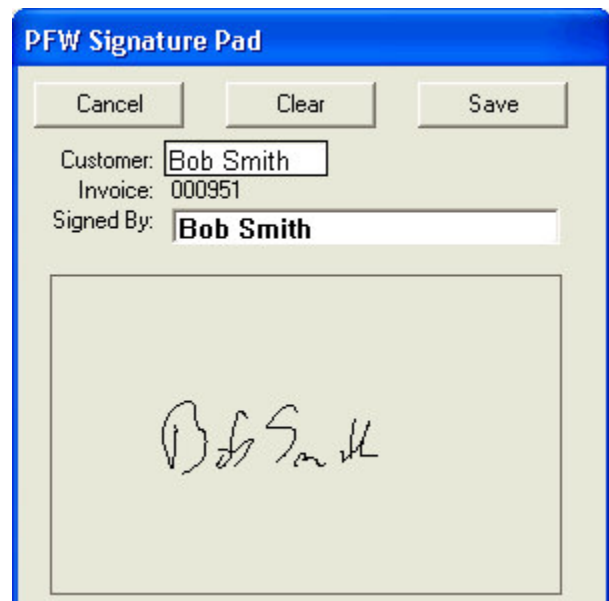


Fig. 5

For more information on this software feature and others, contact your PFW Sales Representative, James Brown or Brian Lewis at (519) 474-3700.



PFW Systems Corporation
850 Medway Park Court
London, Ontario
Canada N6G 5C6

support (519) 474-3700
fax (519) 474-3949
e-mail support@pfw.com
web www.pfw.com

Please Route Parts
 Service
 Sales
 Office