

# client services update



May 2008

## Dog Ears: Data Indicators on Tabs

In R6V05, within **IntelliDealer Administration**, there is a new feature better known as “Dog Ear” (Figure 3) that is a data indicator within the tabs. Basically, the system will fold over the left-hand corner of the tab to indicate data exists within the tab.

The **IntelliDealer Administration – Users** screen can be accessed by moving the cursor over the **Global Settings** link and selecting **Users** (Figure 1) from the drop-down list.

To activate the data indicators, scroll down to the **User Controls** section on the **IntelliDealer Administration – Users** screen (Figure 2).

Figure 1

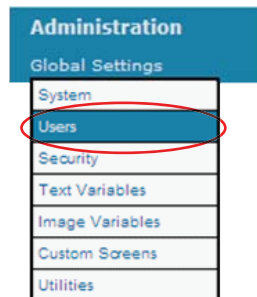


Figure 2

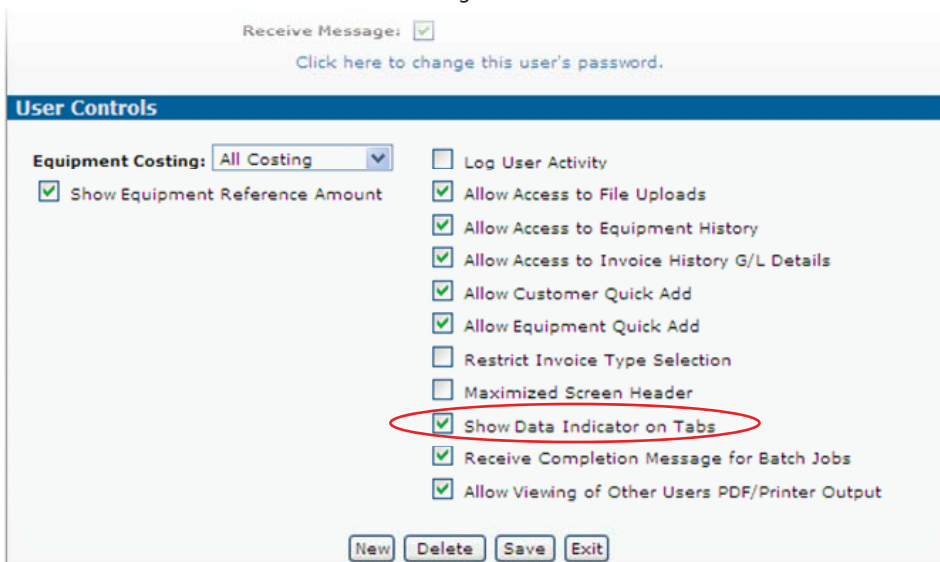


Figure 3



## 2008 Holiday Hours

The PFW business offices will be CLOSED for the following Holidays.

Victoria Day:	Monday, May 19th
Canada Day:	Tuesday, July 1st
Civic Holiday:	Monday, August 4th
*Labor Day:	Monday, September 1st
Thanksgiving:	Monday, October 13th

A limited number of support personnel will be available from 8 a.m. to 5 p.m. ET. Emergency after-hours support will also be available.

\*Emergency support only



## R6V06 Training & Installation

PFW is currently offering a 10% discount for on-site and remote installation and training for R6V06.

### ON-SITE

**5-DAY SPECIAL** – Sunday through Thursday

**3-DAY SPECIAL** – Sunday through Tuesday

### REMOTE

[Weekend load and web overview session](#)

Customers need to be on PFW R6V05 and IBM i5/OS V5R4M0 or later. Training days must be booked before June 30, 2008 and taken before September 30, 2008.

For more information, please contact your PFW Sales Representative, James Brown or Brian Lewis at (519) 474-3300.

For more information on these software features or to order R6V05, contact PFW Client Services at (519) 474-3700, or e-mail [support@pfw.com](mailto:support@pfw.com).



PFW Systems Corporation  
850 Medway Park Court  
London, Ontario  
Canada N6G 5C6

support (519) 474-3700  
fax (519) 474-3949  
e-mail [support@pfw.com](mailto:support@pfw.com)  
web [www.pfw.com](http://www.pfw.com)

Please Route  Parts  
 Service  
 Sales  
 Office